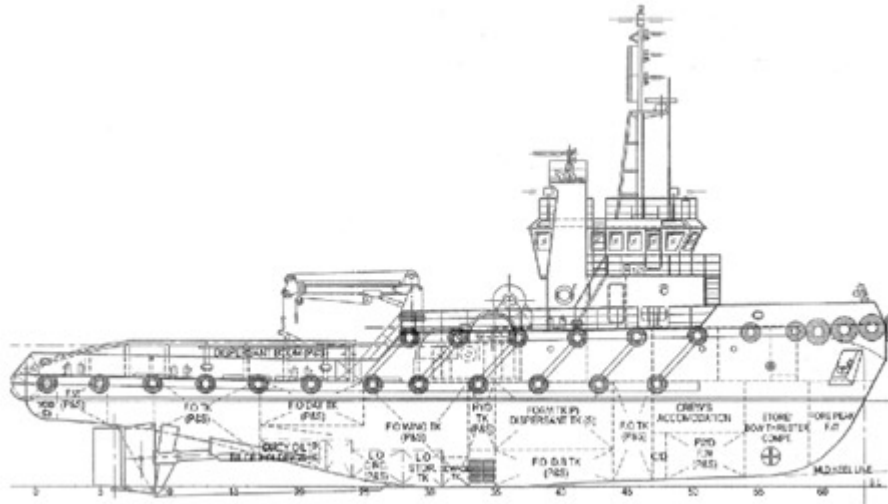


Anchor Handling/Tow Tug

Vessels Specifications



[View Enlarge Image](#)

		Registry	Singapore
Year of Delivery	2005	Type	Ocean Going/ Anchor Handling / Towing Tug
Classification	ABS + A1, Towing Vessel, (E), + AMS	Dimensions	40m x 11.4m x 4.95m
GRT/ NRT / DWT	497T / 149T / 300T	Minimum Working Draft	4.4m / 4.9m (Max)
Clear Deck Space (Main Deck)	16m x 8m	Speed	12.5 knots
Deck Strength	5.0 mt/m ²		
Bollard Pull	60T	Endurance	27 days
Accommodation	Fully air-conditioned for 18 men	Lifesaving	Comply with SOLAS requirements
Fuel (90%)	288 mt	Firefighting	Comply with SOLAS requirements
Fresh Water	80 mt	Freshwater Maker	5 mt/day

Main Engines & Gearboxes	2 x MAK 8M20 diesel engines producing 2100 bhp each @ 1000 rpm c/w 2 x WAF 2345 gearboxes, ratio 4.454:1	Main Engine Consumption	13,500 litres MGO and 30 litres lube oil per 24 hours @ full power. 11,000 litres MGO and 26 litres lube oil per 24 hours @ economic cruising speed of 10 knots
Generators	3 x 300 kW, 380/3/50, generators driven by CAT 3408 DITA	Generator Consumption	450 litres MGO and 10 litres lube oil per 24 hours
Propulsion	2 x fixed pitch propellers 2900mm diameter, manganese bronze in kort nozzles	Steering Gear	Electro hydraulic, 6T torque
Fuel Oil Purifier	Mitsubishi self cleaning fuel oil purifier SJ-700	Lube Oil Purifier	Mitsubishi self cleaning lube oil purifier SJ-10G
Towing Pins & Sharkjaws	KARM FORK combination unit with 2 towing pins & 2 sharkjaws	Bow Thruster	Brunvoll 335hp 3.7T thrust
Anchor Windlass	Hydraulic 7.7T @ 0-14m/min BRATTVAAG	Anchors	2 x 780kg stockless anchors
Anchor Chain	2 x 220m x 28mm diameter U2 steel stud link chain	Towing/Anchor Winch	BRATTVAAG double drum waterfall type SL75-2T hydraulic winch with remote controls in wheelhouse.75T pull @ 0-14m/min 43T pull @ 0-22m/minWire Capacity :- 1000m x 52mm diameterBrake holding :-140T
Stern Roller (Size) SWL	L-3.30m; Dia-1.77m 140 mt	Wire Storage Reels	2 x 9.2T line pull @ 0-26 m/min, storage reels will contain 1000m x 52mm dia
Crane	Dreggen Crane model DKT40 – 2.6 T @ 14m	Tugger Winch	2 X BRATTVAAG 11T line pull @ 0-23m/min
Fendering	Flat bar doubler plates of 500mm x 40mm cross section welded to side shell.	Cutting Equipment	Two bottles oxygen and one bottle acetylene c/w torch
Life rafts	2 x 20 men	Radar	1 x radar. Model FR1500 MK3 1 x radar. Model FR 2105

SSB	Radio console, FURUNO RC-1800-IT-25-250, 24V DC/220V AC with manual c/over to emergency supply antenna feeder through insulator & whip & standoff insulators. c/w DSC & NBDP to meet GMDSS requirements. FURUNO SSB model FS-2570 (250W)	VHF	2 x VHF/FM multi-channel marine radio telephones. FURUNO model FM-8500-25W
Gyro & Automatic Pilot	1 set fitted. Gyro-Tokimec ES-110. Autopilot-Furuno model NAVPILOT – 500	Weather Facsimile	1 x FURUNO model FAX-207
Other Navigation Equipment	2 x INMARSAT-C, EPIRB, Radar Transponder, P.A. System, Navtex Receiver, GPS Navigator, Anemometer, Omni Direction TV Antenna, Echo Sounder, Battery Powered Telephone, Inmarsat M. UAIS.	Fire Monitors	2 fixed foam/water fire monitors of 3000 litres/min each @ 120m head. Capacity of Fire pump: 360 m ³ /hr
Dispersant Booms	2 x 8m dispersant booms fitted	Sewage Treatment Plant	Taiko Kikai SBT-25 for 25 men

